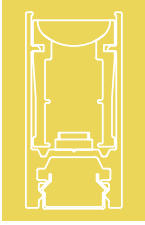




# LiNi BLADE-S

**KKDÖ**  
[www.kkdc.lighting](http://www.kkdc.lighting)



## LiNi BLADE-S

Premium finish, surface mounted linear profile luminaire compatible with a wide range of KKDC LED strips.

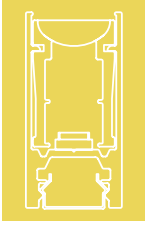
Designed to accommodate KKLN-01 linear lens for narrow beam optic control, LiNi Blade-S also has fully homogenous push-fit cover available.

Innovative & robust end-cap design to minimise light leakage & provide cable stress relief.

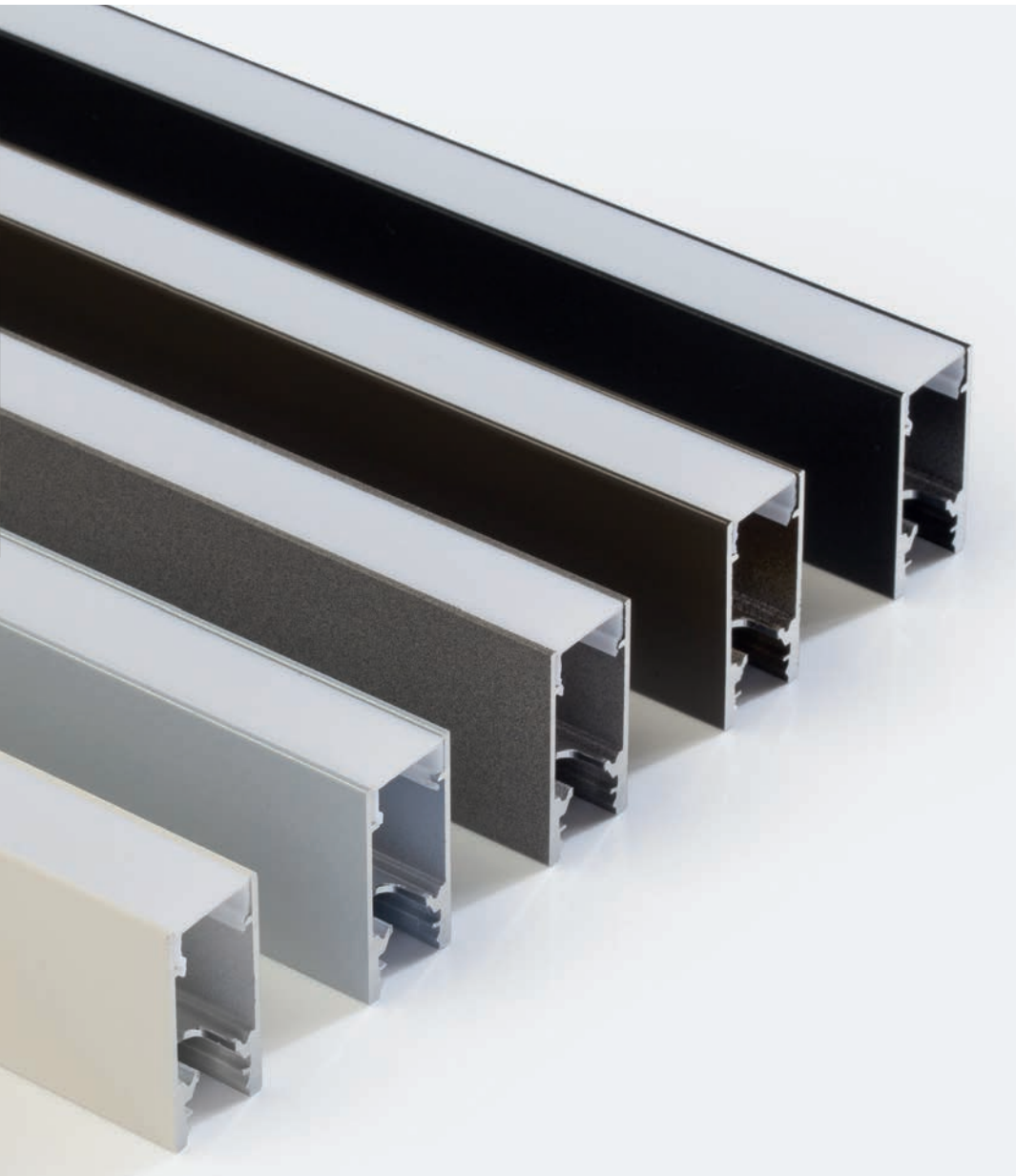
High quality powder coat finish options available as standard: White, Silver, Graphite Grey, Black and textured Bronze.

Available with optional suspension mounting kit.



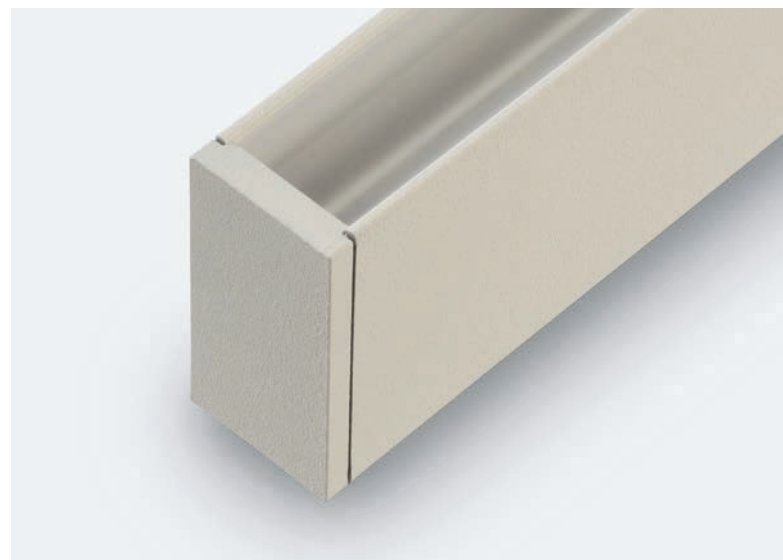
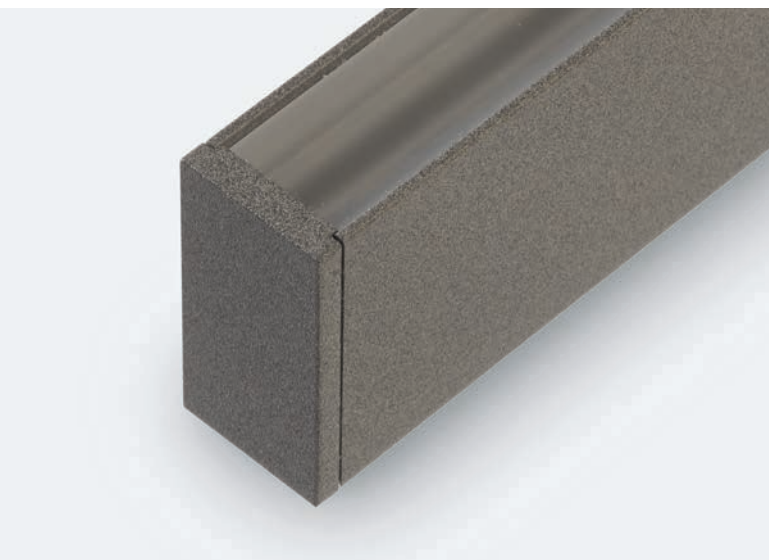


# LiNi BLADE-S

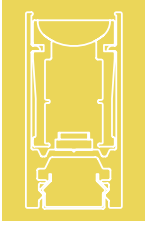


LiNi BLADE-S  
Powder Coat finishes

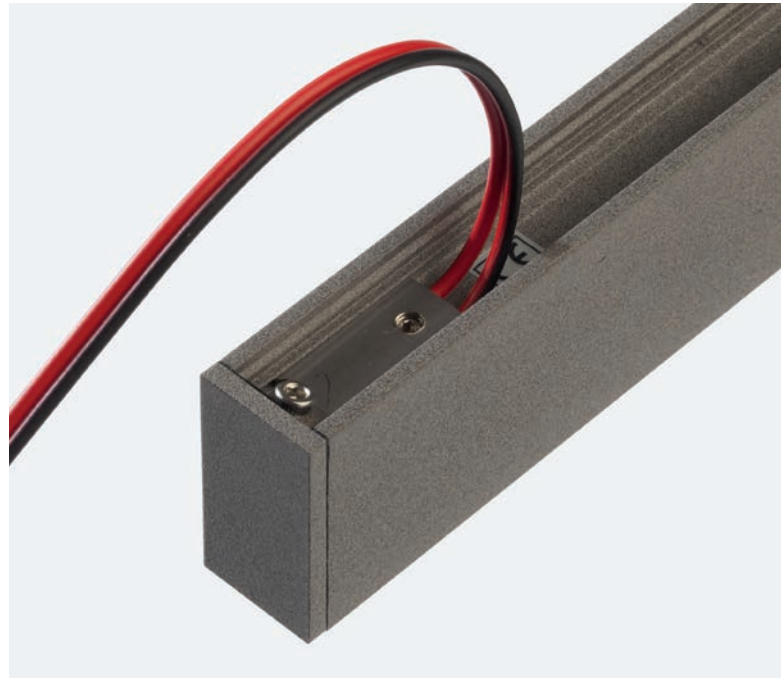
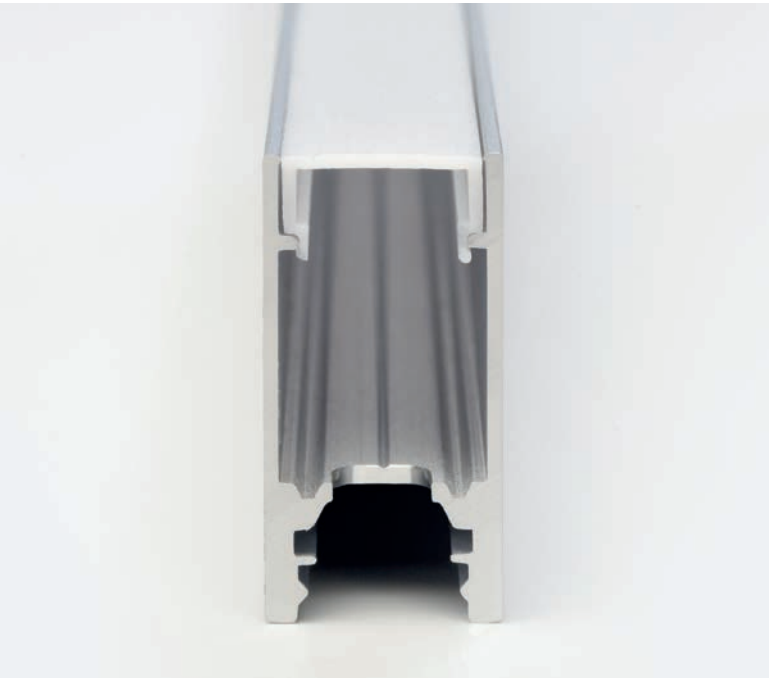
- Black
- Bronze
- Grey
- Silver
- White



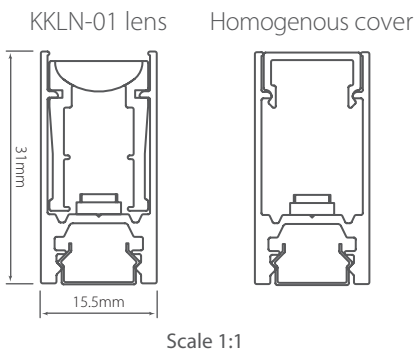




# LiNi BLADE-S



End cap with cable restraint



Suspension Kit

