

NEKKIDA

**A new
multisensory lamp
designed by
lisa marchesi studio
in collaboration
with KKDC**

*The lamp includes many functions,
allowing us to act on our senses.
Hence the name Nekkida, which in Korean
means precisely "feeling, sensation".*

Multisensory, why?

*Because it's the emotion of lighting that
envelops, illuminates and transforms a
space; it's an element that, like a totem,
captures attention and takes on a symbolic
role; it's a tool that allows us to personalize
our space by stimulating our senses.*

How?

*With the light, intended as multifunctional,
we aim to stimulate
the sense of sight, tuning in on your moods:*

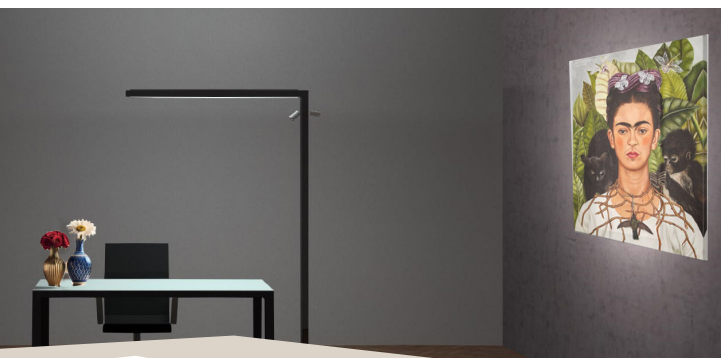
Una lampada tutta per sé

A simple, linear, almost abstract shape.

*When unlit, the lamp resembles a graphite mark on white paper, but
when lit on, it transforms and takes up all the attention in the room.*

*This new floor lamp design comes from the desire to "go beyond", not just
thinking about light, but considering this object as if it were a mix of tools
capable of stimulating our senses.*

*With the starting point of having a highly customizable lamp, with
Nekkida it's possible to choose the type of lighting, but not only that.*



*for instance, indirect dynamic white or coloured light to stimulate
cozy and active moments, direct diffused or accent dynamic white
light to highlight specific details.*

*All these options are tunable through Casambi technology, allowing
everyone to create their own atmosphere, their "safe place".*

*Thanks to the fragrance diffuser, the lamp also affects the sense of
smell.*

NEKKIDA

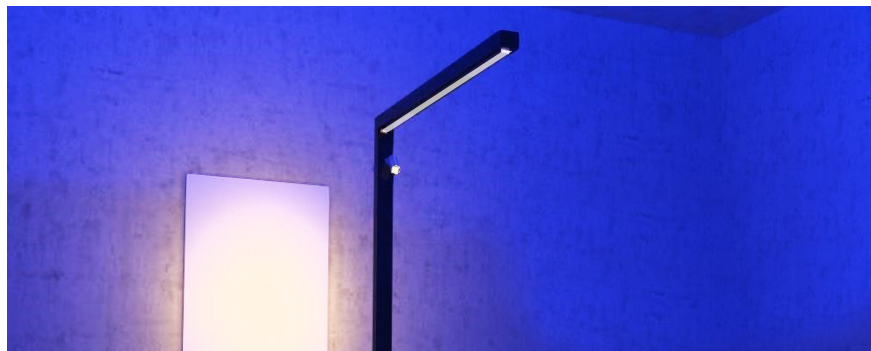
With systems that manage audio, listening to music and channelling sound in a particular direction, we stimulate the sense of hearing.

Last but not least, by using various types of special finishes, we stimulate the sense of touch, too.

Nekkida is therefore a floor lamp that can serve multiple functions, with its applied technologies and aesthetic details that make its design distinctive.

The lamp is characterised by a direct diffused dynamic white light from 1900K to 5000K, an indirect diffused dynamic white light from 1900K to 5000K and RGBW.

On the vertical element, it is possible to have up to two spotlights with medium optics and fixed colour temperature, selectable at 2700K/3000K/3500K,



offering a more focused light, very useful for example, for illuminating an object on a table, on the floor or an image on the wall. Thanks to the patented technology by KKDC and the "nano louvre" filter applied to the direct light, the lamp offers very high comfort, reducing glare.

The light is highly customisable, both in terms of quantity, colour temperature or colour, pretty easily thanks to the CASAMBI app and a control panel placed on the NEKKIDA vertical element for on/off switching.

Also included are a fragrance diffuser via rechargeable USB, speakers for sound diffusion, and a USB port to charge devices.

Future developments may be directed towards innovative and ecological finishing materials, as well as the possibility of projecting videos and having a battery-operated version... but we will discover more about this in the near future.

Stay tuned!



NEKKIDA

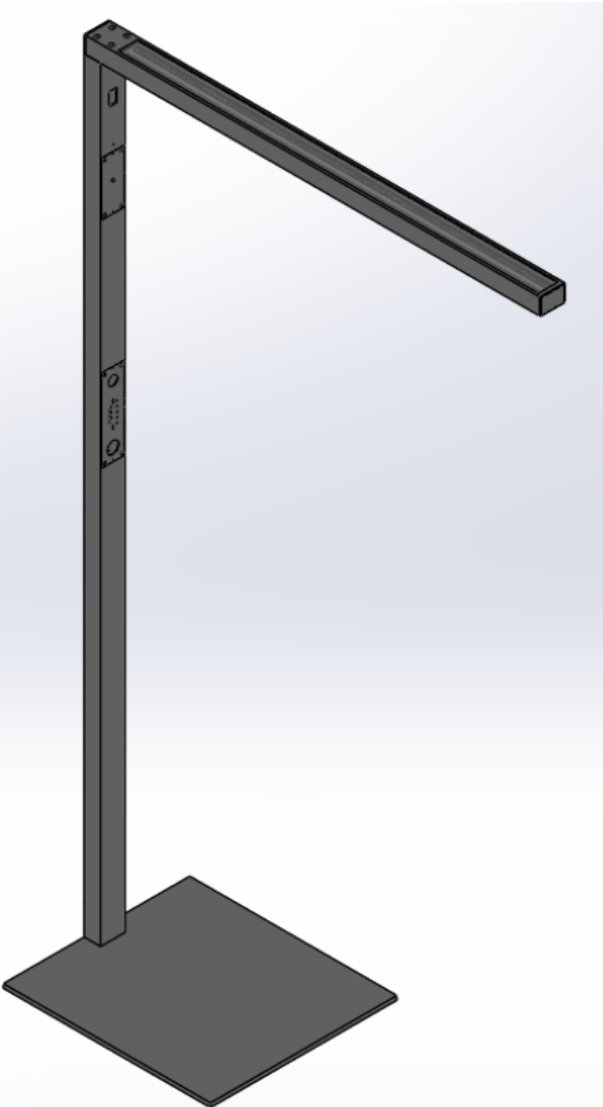
Made in Korea

- KKDC LED lighting know-how
- product development expertise



Designed in Italy

- sensorial product
- customisable lighting
- multifunctional



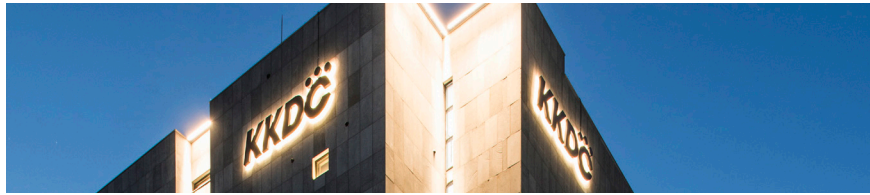
Architectural Lighting Expertise

KKDC

KKDC is an established manufacturer, designing and producing a wide range of specialist LED lighting solutions for high end architectural markets worldwide. With our R&D Centre is based in Seoul, South Korea, KKDC has always been grounded in research and implementation of complete electronic and engineering solutions in the application of LED's produced from the best performing patented materials.

To learn more about KKDC please visit website:

<https://kkdc.lighting/it/>



lisa marchesi studio

lisa marchesi studio is an independent lighting design firm, based in Milan, that enhances the designed spaces and places with light and darkness. When designing the lighting, we have placed the human being at the center, creating luminous atmospheres that contain emotions, we have combined different techniques to preserve and emphasize any type of architecture and environment.

To learn more about lisa marchesi studio please visit website:

<https://www.lisamarchesi.com/>

CASAMBI

Casambi, a leader in modern wireless lighting control solutions based on Bluetooth Low Energy, provides solutions with excellent user experience, high performance and scalability. These range from basic control of individual fixtures to large-scale solutions with cloud-based remote control, monitoring, and data logging.

To learn more about CASAMBI please visit website:

<https://casambi.com/>

For NEKKIDA enquiries please contact: info@kkdc.it