

General

# KOH 40-H Full Spectrum

## Specification sheet



<b>Dimension</b>	H139/W42.8/L580-1700mm (H5.47/W1.68/L22.83-66.93in)
<b>Unit length</b>	560/1120/1680mm (22.05/44.09/66.14in)
<b>Chip</b>	<b>Full Spectrum</b> Toyoda Gosei, Epistar
<b>Beam angle</b>	130° (diffuser) /60° (Dark Louvre)
<b>Colours</b>	<b>Full Spectrum</b> 2700K/3000K
<b>Bin/Step</b>	<b>Full Spectrum</b> 3-step MacAdam ellipse
<b>CRI</b>	≥ 95
<b>Lifetime</b>	50,000 hours @ 25°C (50,000 hours @ 77°F)
<b>Operating temp</b>	T <sub>a</sub> = -20 to 45°C (T <sub>c</sub> max = 62.9°C) T <sub>a</sub> = -4 to 113°F (T <sub>c</sub> max = 145.2°F)
<b>IP rating</b>	IP40
<b>Finish</b>	Matt Silver/Grey/White/Black/Bronze Powder Coated
<b>Cover/lens</b>	Diffused/Prismatic/Louvre + Frosted Cover
<b>Mounting</b>	Surface mounting via screw fixing, suspended via suspension kit
<b>Power feed</b>	Male/female connectors
<b>Control</b>	0-10V/DALI (Integrated Power Supply)



### LED Grading Key

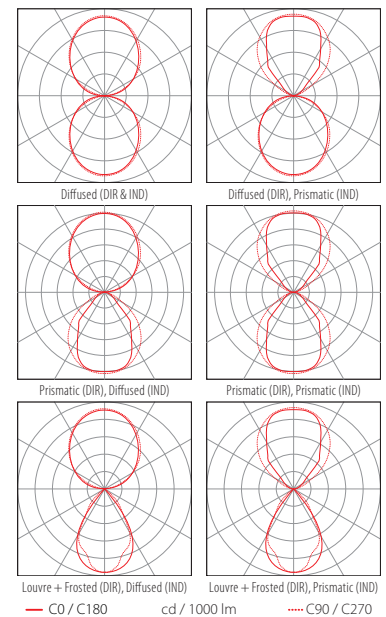
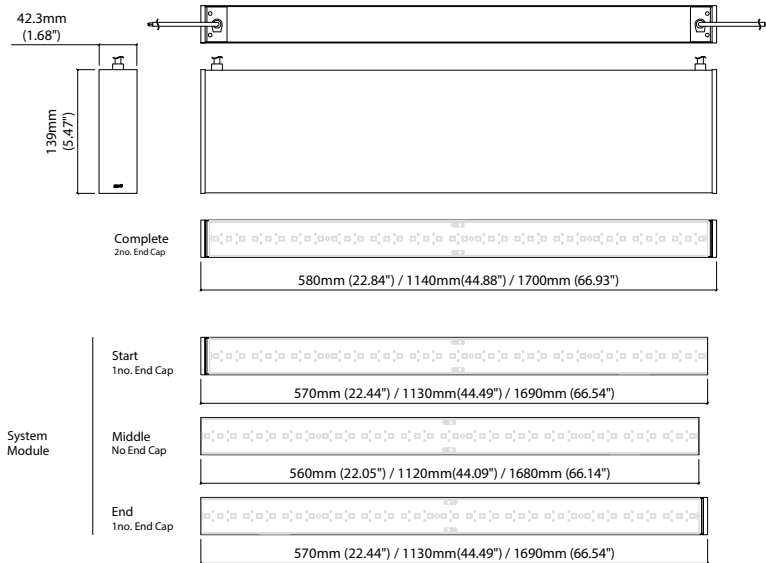
**Full Spectrum\***  
Full visible spectrum NO  
UV or IR 380nm-780nm  
3-step CCT range

\*KKDC tuned  
CCT range

### PERFORMANCE DATA @ 3000K / @ 580MM COMPLETE MODULE (22.84IN)

Power consumption	Supply voltage	Supply current	Power factor:
IND-17.5W/DIR-18.5W	240V AC 50Hz	0.085A	0.94 @ 239.99V, 50Hz

	Diffused Cover (DIR)	Prismatic Cover (DIR)	Louvre + Frosted Cover (DIR)	Diffused Cover (IND)	Prismatic Cover (IND)	CRI	R9	Rf	Rg
<b>Full Spectrum</b>	720lm 38.3lm/W	850lm 45.4lm/W	350lm 18.4lm/W	860lm 46.4lm/W	980lm 52.8lm/W	95	74	94	100



Data derived from independent UKAS/IESNA LM-79-08 accredited testing of production samples.

# KOH 40-H Full Spectrum Length Availability List



## KOH 40-H Full Spectrum (IND)

Length Code		Fixture Length <sup>1</sup>		LED Strip <sup>2</sup>		End Cap Dimension <sup>3</sup>		Wattage (W)	Output (lm)	
Metric	Imperial(US)	Metric	Imperial(US)	Metric	Imperial(US)	Metric	Imperial(US)		3000K (Test Data)	Range Data
		580mm	22.83in	560mm	22.05in	10mm	0.39in	18.5	977	272-1016
		1140mm	44.88in	1120mm	44.09in	10mm	0.39in	37	1954	545-2032
		1700mm	66.93in	1680mm	66.14in	10mm	0.39in	55.5	2930	817-3048

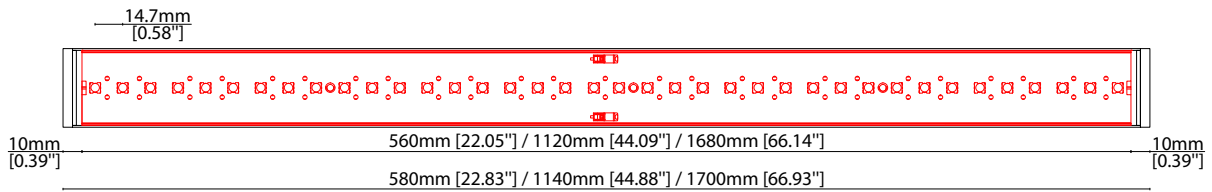
## KOH 40-H Full Spectrum (DIR)

Length Code		Fixture Length <sup>1</sup>		LED Strip <sup>2</sup>		End Cap Dimension <sup>3</sup>		Wattage (W)	Output (lm)	
Metric	Imperial(US)	Metric	Imperial(US)	Metric	Imperial(US)	Metric	Imperial(US)		3000K (Test Data)	Range Data
		580mm	22.83in	560mm	22.05in	10mm	0.39in	17.5	924	258-961
		1140mm	44.88in	1120mm	44.09in	10mm	0.39in	35	1848	515-1922
		1700mm	66.93in	1680mm	66.14in	10mm	0.39in	52.5	2772	773-2883

<sup>1</sup> Length of fixture including aluminium extrusion and end clamps

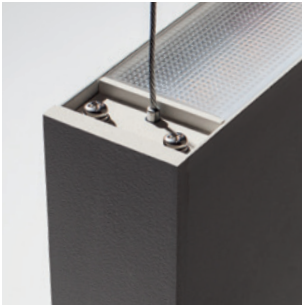
<sup>2</sup> Fixture without clamps available in this length upon request

<sup>3</sup> Overall dimension including both end caps and internal wiring space



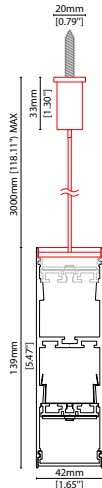
## MOUNTING OPTIONS

Note: Accessories are to be ordered separately with corresponding code shown below.



**KКСW-09**

Suspension mounting kit  
(allow 2 per metre/40in)  
Aluminium finish



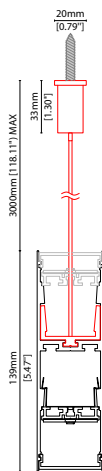
**KКСW-08**

Ceiling rose  
Dia 127mm (5in) x  
H 6.35mm (0.25in)  
Maximum weight 20kg per/kit



**KКJT-04**

Joining bar/  
Suspension kit  
(allow 1 per join)



## POWER CABLE



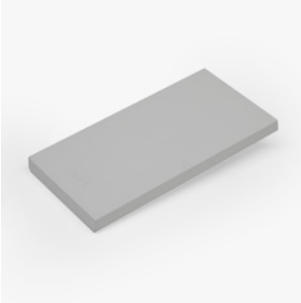
KКCN-26

**KКCN-26**

Power feed cable

### END CAPS AND LIGHT LEAK TAPE

---



- KKEC-S1 (2no.) - End cap pair (Mat white)
- KKEC-S2 (2no.) - End cap pair (Mat silver)
- KKEC-S3 (2no.) - End cap pair (Mat gray)
- KKEC-S4 (2no.) - End cap pair (Mat black)
- KKEC-S5 (2no.) - End cap pair (Bronze)



**Black tape** (prevents light leak)