

General

# KOH 40-R High Power Fixture Guide

# KKDÖ

Indoor | Recessed | Max output up to 2190lm

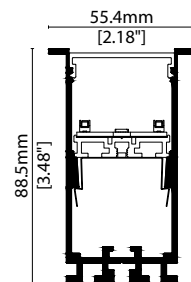


## Key applications

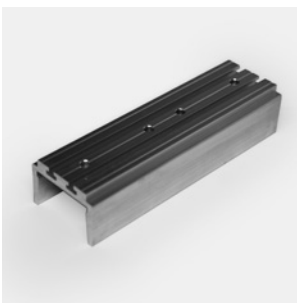
- ✓ Ceiling
- ✓ Office lighting
- ✓ Downlighting
- ✓ Wall grazing
- ✓ Interior

## Key features

- ✓ Control Gear
- ✓ Custom lengths
- ✓ Decorative
- ✓ Diffusion: Homogenous
- ✓ Direct view
- ✓ Extensive CCT range
- ✓ Form factor: Large
- ✓ High lumen efficacy
- ✓ IP40
- ✓ Lensed
- ✓ Output max



## MOUNTING METHODS

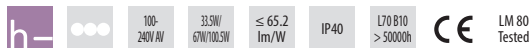


KJKT-03 Joining bar



KKBK-19 Fixing bracket

# KOH 40-R High Power Specification sheet



<b>Dimension</b>	H88.5/W55.4/L584-1704mm (H3.48/W2.18/L22.99-67.09in)
<b>Unit length</b>	560/1120/1680mm (22.05/44.09/66.14in)
<b>Chip</b>	<b>h-line</b> CREE
<b>Beam angle</b>	10°/20°/30°lens
<b>Colours</b>	<b>h-line</b> 2200K/2700K/3000K/3500K/4000K/5000K
<b>Bin/Step</b>	<b>h-line</b> 3-step MacAdam Ellipse (4-step @5000K)
<b>CRI</b>	≥90 (2700K/3000K) ≥80 (2200K/3500/4000K) ≥75 (5000K)
<b>Lifetime</b>	50,000 hours @ 25°C (50,000 hours @ 77°F)
<b>Operating temp</b>	T <sub>a</sub> = -20 to 45°C (T <sub>c</sub> max = 62.9°C) T <sub>a</sub> = -4 to 113°F (T <sub>c</sub> max = 154.2°F)
<b>IP rating</b>	IP40
<b>Finish</b>	Matt Silver/Grey/White/Black/Bronze Powder Coated
<b>Cover/lens</b>	Louvre + (Frosted Cover/10°/20°/30°/Spread Lens)
<b>Mounting</b>	Recessed mounting via bracket
<b>Power feed</b>	Male/female connectors
<b>Control</b>	0-10V/DALI (Integrated Power Supply)



### LED Grading Key

**Exclusive Grade**

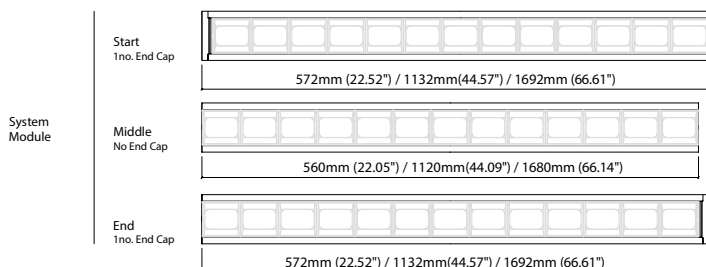
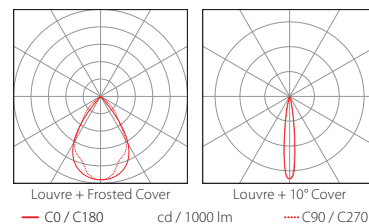
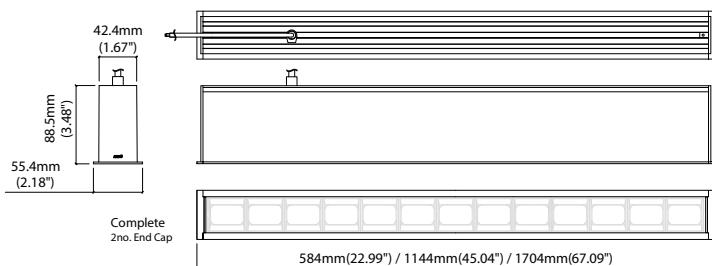
**h-line\*** \*KKDC tuned CCT range

Constant Voltage Lensed High Power LED  
3-step CCT range  
(4-step for 5000K)

### PERFORMANCE DATA @ 3000K / @ 580MM COMPLETE MODULE (22.84IN)

Power consumption	Supply voltage	Supply current	Power factor
33.5W	240V AC 50Hz	0.14A	0.95 @ 239.99V, 50Hz

	Louvre + Frosted Cover	Louvre + 10° Lens	Louvre + 20° Lens	Louvre + 30° Lens	Louvre + Spread Lens	CRI	R9	Rf	Rg
<b>h-line</b>	870lm 27lm/W	2190lm 65.2lm/W	2150lm 64.1lm/W	1890lm 56.4lm/W	810lm 24.1lm/W	94	74	92	102



Data derived from independent UKAS/IESNA LM-79-08 accredited testing of production samples.

# KOH 40-R High Power

## Code Table



### FIXTURE

Model	Finish	Cover	Grade	LED Type*	Colour (CCT)	Length Availability**	Lens	Module Type <sup>4</sup>	Control Type	Input											
KOH 40-R	Matt White Paint	MW	Louvre	T	h	h	High Power	957A	2200K <sup>2</sup>	22	580mm	m	0580	Frosted lens	FL	Complete	FE	0-10V	4	AC 100V	b
	Matt Silver Paint	MS							2700K <sup>1</sup>	27	1140mm	m	1140	10°	10	Start	LE	DALI	3	AC 220-240V	d
	Matt Grey Paint	MG							3000K <sup>1</sup>	30	1700mm	m	1700	20°	20	Middle	XE	No Controller	5	No PSU	i
	Matt Black Paint	MB							3500K <sup>2</sup>	35	22.05in	i	0022	30°	30	End	RE				
	Bronze Paint	BP							4000K <sup>2</sup>	40	44.09in	i	0044	Spread lens	SL						
					5000K <sup>3</sup>	50	66.14in	i	0066												

<sup>1</sup> 2700K/3000K – 90CRI

<sup>2</sup> 2200K/3500K/4000K – 80CRI

<sup>3</sup> 5000K – 75CRI

<sup>4</sup> Module Type (various fixture lengths)

Complete	FE	
Start	LE	
Middle	XE	
End	RE	

\* Refer to **LED Grading Key** on **Specification sheet** page

\*\* Refer to **Length Availability List** or enter total run length instead of length code

### Code Example:

GB	-	MW	-	T	-	h	-	957A	-	30	-	m	-	1140	-	30	-	FE	-	4	-	d
KOH 40-R		Matt White Paint		Louvre		h		High Power		3000K		m		1140mm		30°		Complete		0-10V		AC 220-240V

### ACCESSORIES

#### Mounting Accessories

KKJT-03	Joining Bar
KKBK-19	Fixing bracket

\* Refer to **Mounting options** on **Accessories** pages

#### Connection Accessories

KKCN-26	Power Feed Cable
---------	------------------

\* Refer to **Power feed** on **Accessories** pages

#### PSU/Driver

0-10V/DALI (Integrated Power Supply)

### LED ENGINE VARIANTS (LED STRIP TYPE)

Colour	Output	LED	Lumen/module	Wattage	Spec Doc	Length
Single CCT	Mid	532B	850/module	18.5	KOH 40-R Full Spectrum	560/1120/1680mm (22.05/44.10/66.14in)
	Max	630A	1170/module	17.5	KOH 40-R High CRI	560/1120/1680mm (22.05/44.10/66.14in)
	Mid	957A	2190/module	33.5	KOH 40-R High Power	560/1120/1680mm (22.05/44.10/66.14in)

\* Performance data: h-line, louvre + 10° lens, 3000K, 580mm module

# KOH 40-R High Power Length Availability List



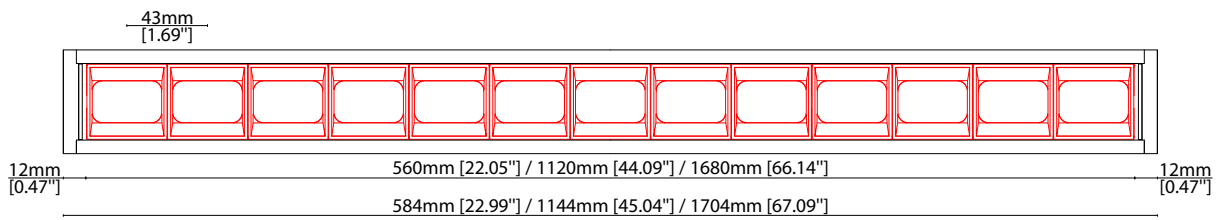
## KOH 40-R High Power

Length Code		Fixture Length <sup>1</sup>		LED Strip <sup>2</sup>		End Cap Dimension <sup>3</sup>		Wattage (W)	Output (lm)	
Metric	Imperial(US)	Metric	Imperial(US)	Metric	Imperial(US)	Metric	Imperial(US)		3000K (Test Data)	Range Data
m0584	i0023	584mm	22.99in	560mm	22.05in	14mm	0.55in	33.5	2184	646-2272
m1144	i0045	1144mm	45.04in	1120mm	44.09in	14mm	0.55in	67	4368	1292-4543
m1704	i0067	1704mm	67.09in	1680mm	66.14in	14mm	0.55in	100.5	6553	1938-6815

<sup>1</sup> Actual total overall length of light fixture (LED strip + end caps + void/wire hole)

<sup>2</sup> Actual length of PCB strip

<sup>3</sup> Actual length of 2x end caps



### MOUNTING OPTIONS

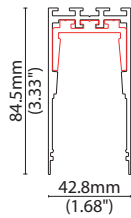
Note: Accessories are to be ordered separately with corresponding code shown below.



**KKJT-03**

Joining bar  
(allow 1 per join)

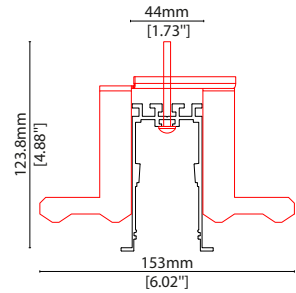
L120/W42.8/H84.5mm  
(L4.72/W1.68/H3.33")



**KKBK-19**

Fixing bracket  
(allow 2 per metre/40in)

S/Steel finish  
L50/W153/H118mm  
(L1.97/W6.02/H4.65")



### POWER CABLE

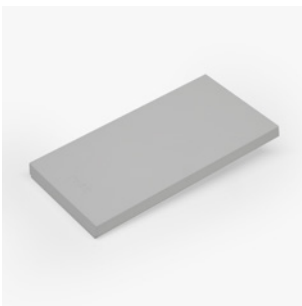


KKCN-26

**KKCN-26**

Power feed cable

### END CAPS AND LIGHT LEAK TAPE



- KKEC-S1 (2no.) - End cap pair (Mat white)
- KKEC-S2 (2no.) - End cap pair (Mat silver)
- KKEC-S3 (2no.) - End cap pair (Mat gray)
- KKEC-S4 (2no.) - End cap pair (Mat black)
- KKEC-S5 (2no.) - End cap pair (Bronze)



**Black tape** (prevents light leak)