



SEN Louvre CV 035

Specification sheet



Dimension	H61.5/W39.2/L260-2010mm (H2.42/W1.54/L10.24-79.13in) 1260mm (49.60in) max for UL
PCB increment	250mm (9.84in)
LED pitch	35mm - 28LED/m (1.38in - 9LED/ft)
Chip	h-line Lumileds
Beam angle	10°/20°/30°
Colours	h-line White: 2700K/3000K/3500K/4000K/5000K (90CRI for 2700K/3000K)
Bin/Step	h-line 3-step MacAdam Ellipse 4-step MacAdam Ellipse(5000K)
CRI	≥ 90 (2700K/3000K) ≥ 80 (3500K/4000K/5000K)
Lifetime	50,000 hours @ 25°C (50,000 hours @ 77°F)
Operating temp	T _a = -25 to 50°C (T _c max = 90°C) T _a = -13 to 122°F (T _c max = 194°F)
IP rating	IP54/67
Finish	Silver anodised
Cover/lens	Clear
Mounting	Surface mounting via brackets
Power feed	Sheathed hardwire tails or male/female connectors
Control	1-10V/DMX/DALI



LED Grading Key

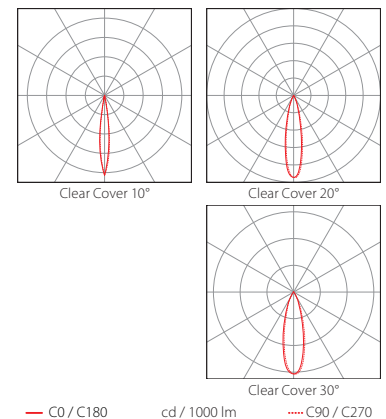
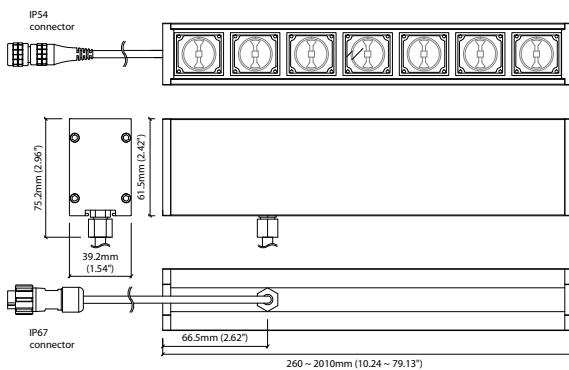
Exclusive Grade

h-line*	*KKDC tuned
Constant Voltage Lensed High Power LED	CCT range
3-step CCT range	
(4-step for 5000K)	

PERFORMANCE DATA @ 3000K

Power consumption	Supply voltage	Supply current
67.2 W/m (20.48 W/ft)	24V DC	2.8 A/m (0.85 A/ft)

	Clear Cover 10°	Clear Cover 20°	Clear Cover 30°	CRI	R9
h-line	2830lm/m (865lm/ft) 42.1lm/W	2770lm/m (845lm/ft) 41.2lm/W	2760lm/m (840lm/ft) 41.0lm/W	93	77



Data derived from independent UKAS/IESNA LM-79-08 accredited testing of production samples.

High Power

SEN Louvre CV 035 Accessories

KKDÖ

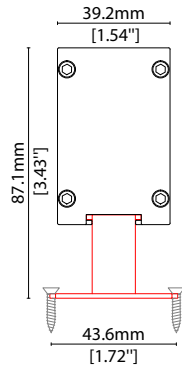
MOUNTING OPTIONS

Note: Accessories are to be ordered separately with corresponding code shown below.



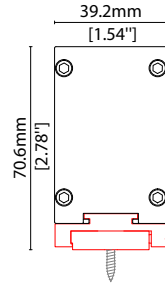
KKBK-02

Fixed bracket (allow 2 per metre/40in)
Steel finish
Pre-assembled for double tail



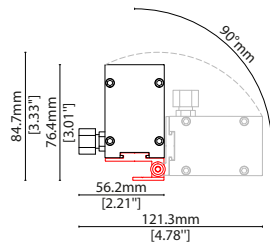
KKBK-09

Mounting plate
(allow 2 per metre/40in – factory fitted)
Silver anodised aluminium finish
Pre-assembled for double tail



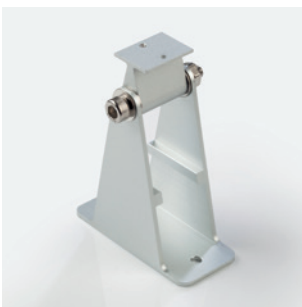
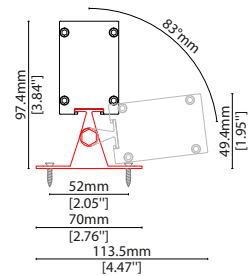
KKBK-23

Low adjustable bracket
(allow 2 per metre/40in)
Silver anodised aluminium finish
Pre-assembled for double tail



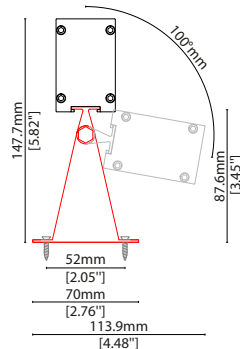
KKBK-16

Small adjustable bracket
(allow 2 per metre/40in)
Silver anodised aluminium finish
Pre-assembled for double tail



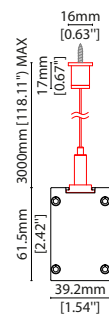
KKBK-17

Large adjustable bracket
(allow 2 per metre/40in)
Silver anodised aluminium finish
Pre-assembled for double tail



KKSU-05

Quick release suspension wire kit





SEN Louvre CV 035 Accessories



EXTERIOR JUNCTION BOXES



KKJB-07

IP67 Slim J-Box
(including type A,B,C,D bushings)



KKJB-07R

Potting resin for IP67 Slim J-Box

AVAILABLE PSU OPTIONS

Control Mode	PSU (Order Code)	Input Voltage AC	Output Voltage DC	Rated Output Current	Rated Power	Dim %	IP Rating
Switched	CEN-60-24	90-295V	24V	2.5A	60W	-	IP67
	HLG-60H-24	90-305V	24V	2.5A	60W	-	IP67
	HLG-100H-24	90-305V	24V	4.0A	100W	-	IP67
	HLG-150H-24	90-305V	24V	6.3A	150W	-	IP67
	HLG-240H-24	90-305V	24V	10A	240W	-	IP67
0-10V (1-10V)	PWM-40-24	90-305V	24V	1.67A	40W	100-0.15 (100-10)	IP67
	PWM-60-24	90-305V	24V	2.5A	60W	100-0.15 (100-10)	IP67
	PWM-90-24	90-305V	24V	3.67A	90W	100-0.15 (100-10)	IP67
	PWM-120-24	90-305V	24V	5.0A	120W	100-0.15 (100-10)	IP67
DALI	LIN100A1	120-277V	24V	1A per channel	100W	100-0.1	IP66/IP40
DMX RGB	LIN100A1	120-277V	24V	1.33A per channel	100W	100-0.1	IP66/IP40
DMX RGBW	LIN100A1	120-277A	24V	1A per channel	100W	100-0.1	IP66/IP40

Flicker Free Options - Combination of PSU+ sub-controller

Control Mode	PSU (Order Code)	Sub-controller (Order Code)	Input Voltage AC	Output Voltage DC	Rated Output Current	Rated Power	Dim %	IP Rating PSU/ Sub-controller
0-10V or 1-10V	CEN-60-24	KKDM-05	90-295V	24V	2.5A	60W	100-0.9	IP67/IP20
	HLG-60H-24	KKDM-05	90-295V	24V	2.5A	60W	100-0.9	IP67/IP20
	HLG-100H-24	KKDM-05	90-295V	24V	4.0A	100W	100-0.9	IP67/IP20
	HLG-150H-24	KKDM-05	90-295V	24V	6.3A	150W	100-0.9	IP67/IP20
	HLG-240H-24	KKDM-05	90-295V	24V	10.0A	240W	100-0.9	IP67/IP20
	CEN-60-24	KKDL-02/03	90-295V	24V	2.5A	60W	100-0.1	IP67/IP20
DALI	HLG-60H-24	KKDL-02/03	90-305V	24V	2.5A	60W	100-0.1	IP67/IP20
	HLG-100H-24	KKDL-02/03	90-305V	24V	4.0A	100W	100-0.1	IP67/IP20
	HLG-150H-24	KKDL-02/03	90-305V	24V	6.3A	150W	100-0.1	IP67/IP20
	HLG-240H-24	KKDL-02/03	90-305V	24V	10.0A	240W	100-0.1	IP67/IP20
DMX RGB	CEN-60-24	KKSC-03	90-295V	24V	2.5A	60W	100-0.9	IP67/IP20
	HLG-60H-24	KKSC-03	90-305V	24V	2.5A	60W	100-0.9	IP67/IP20
	HLG-100H-24	KKSC-03	90-305V	24V	4A	100W	100-0.9	IP67/IP20
	HLG-150H-24	KKSC-03	90-305V	24V	6.3A	150W	100-0.9	IP67/IP20
	HLG-240H-24	KKSC-03	90-305V	24V	10.0A	240W	100-0.9	IP67/IP20

¹ The items shown above cover the most frequently used specification but does not exhaust the possible options

² PSU and/or driver can be chosen from the table, or KKDC may recommend the best option upon receipt of the controls requirement and installation environment

³ Electrical shop drawing will include detailed information of PSU and relevant control drivers

⁴ Cut sheets are available on the controls section of www.kkdc.lighting or upon request